

Science-athon

Kauri



Earth and Space



1

What is the third planet from the sun?

Earth



2

What is the name of the largest ocean on Earth?

The Pacific Ocean



3

What is the name of the highest mountain on Earth?

Mt Everest



4

The sixth planet from the sun features an extensive ring system. What is the name of this planet?

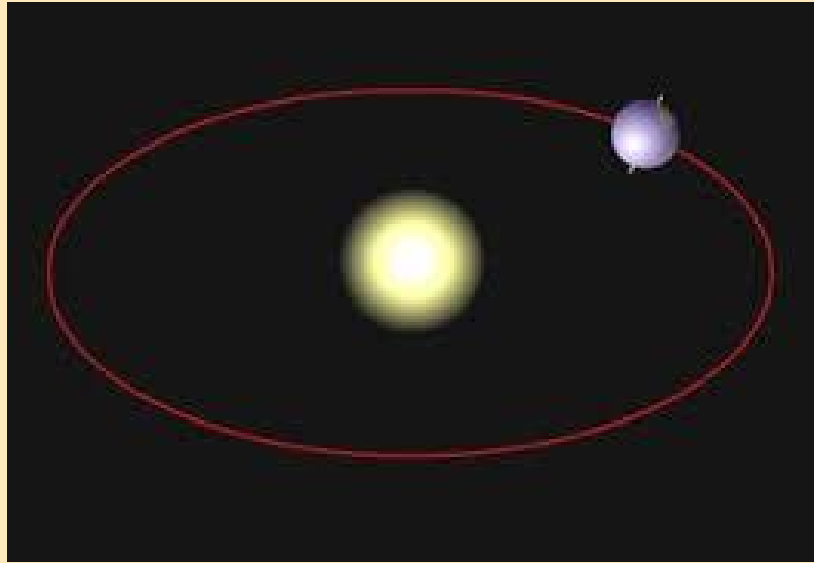
Saturn



5

Does the Sun orbit the Earth?

No



6

What planet is closest in size to Earth?

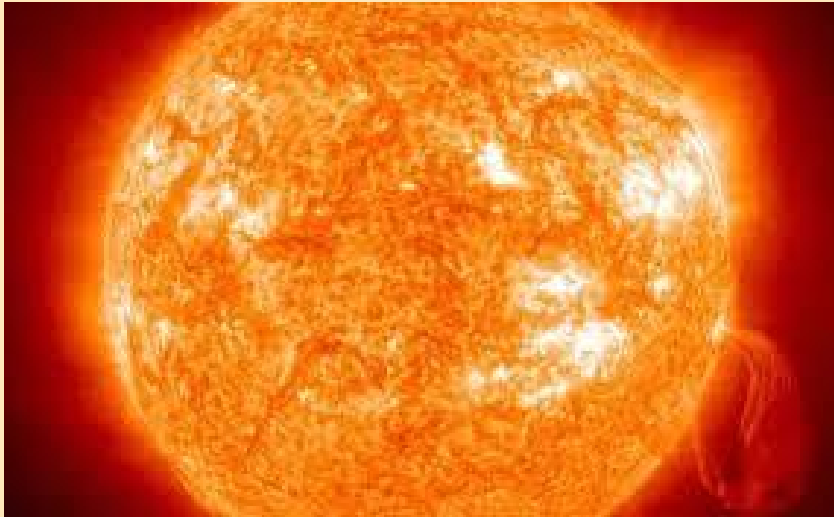
Venus



7

Is the Sun a star or a planet?

The Sun is a star.



8

Who was the first person to walk on the moon?

Neil Armstrong



9

The great Barrier Reef is found off the coast of which country?

Australia



10

What do you call a person who studies rocks?

A geologist.



11

Over a long period of time while under extreme heat and pressure, graphite turns into which precious mineral?

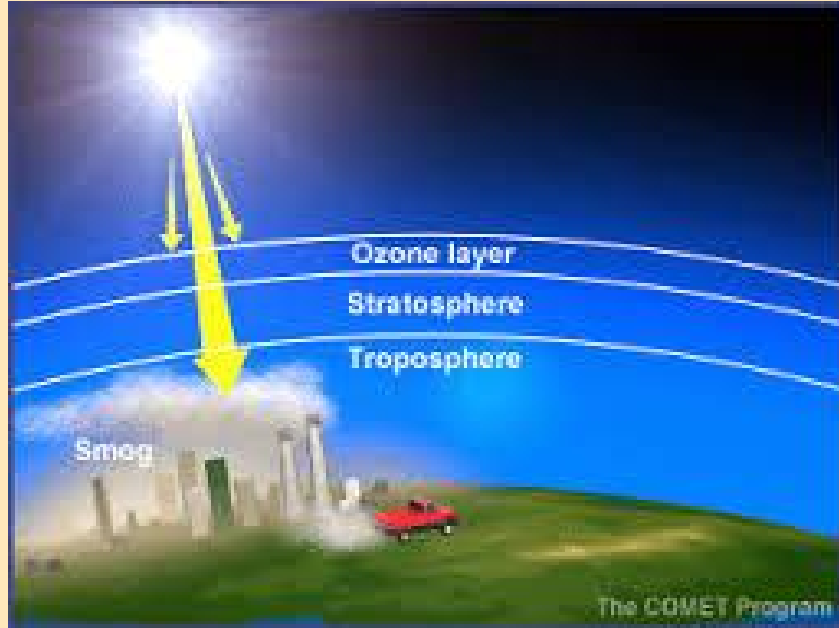
Diamond



12

What is the name of the layer of earth's atmosphere that absorbs the majority of the potentially damaging ultraviolet light from the sun?

The Ozone layer



13

What is the second most common gas found in the air we breathe?

HINT: the first is nitrogen

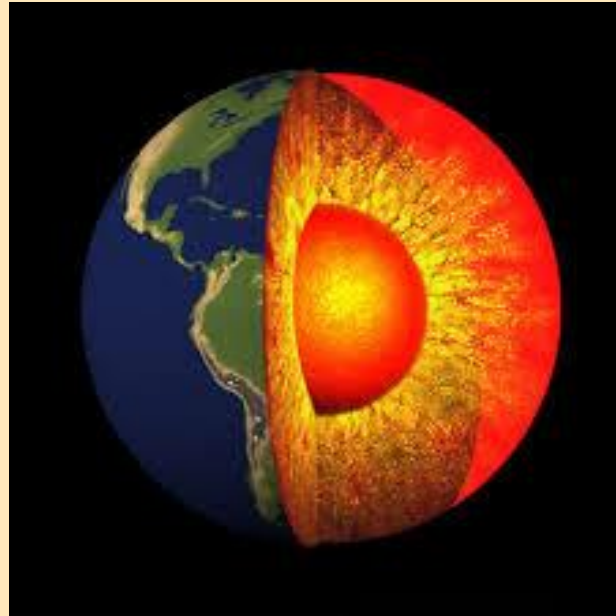
Oxygen



14

Which is hotter, the center of the earth or surface of the sun?

The centre of the Earth.



15

What is the name of NASA's most famous space telescope?

The Hubble telescope



16

Do stalactites rise from the floor or hang from the ceiling of limestone caves?

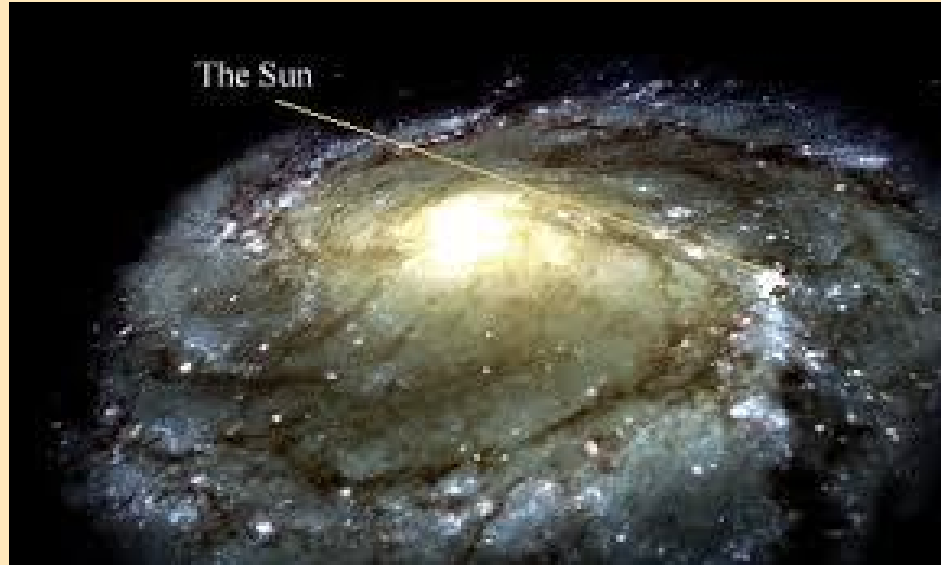
They hang from the ceiling.



17

Earth is located in which galaxy?

The Milky Way



18

Name the three time periods of the dinosaurs.

Triassic, Jurassic, Cretaceous



19

What is the name of the deepest location in the world's oceans?

The Mariana Trench



In the depths of the Mariana Trench the Pacific oceanic crust bows under the Pacific continental crust. This is the deepest point on Earth.

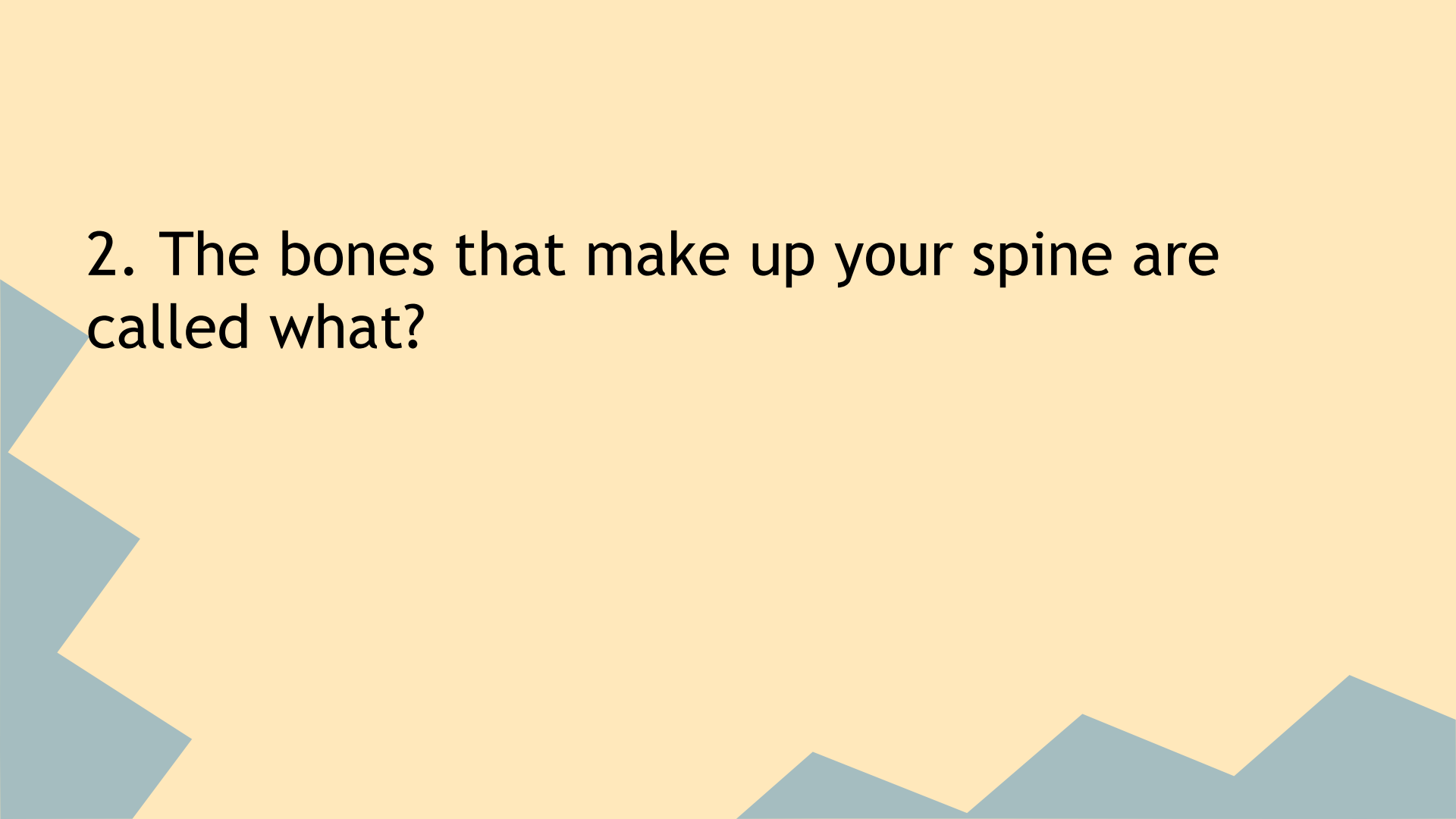
Human Biology



1. Your tongue is home to special structures that allow you to experience tastes such as sour, sweet, bitter and salty. What name is given to these structures?

Taste buds





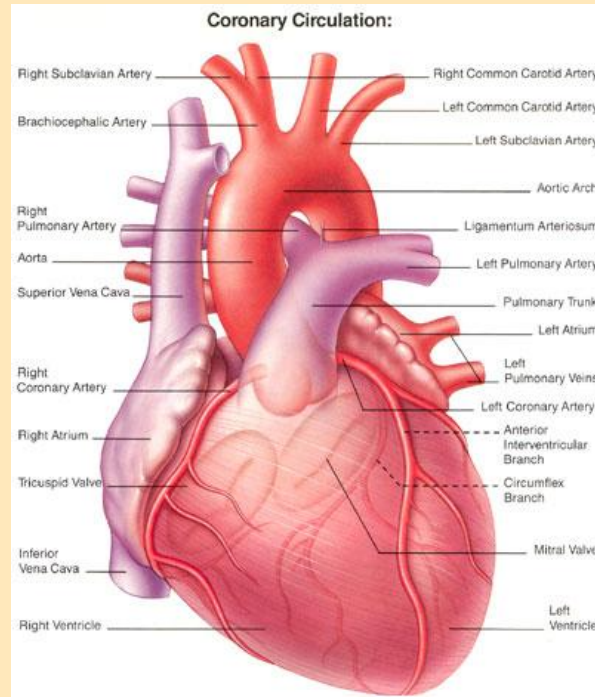
2. The bones that make up your spine are called what?

Vertebrae



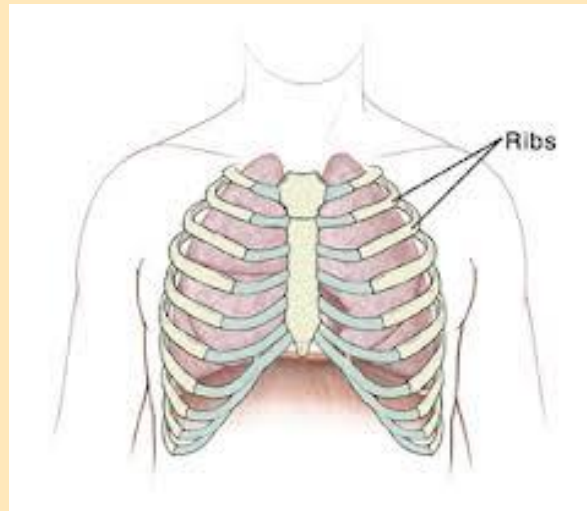
3. The flow of blood through your heart and around your body is called?

Circulation



4. The bones around your chest that protect organs such as the heart are called what?

Ribs



5. What is the human body's biggest organ?

The skin



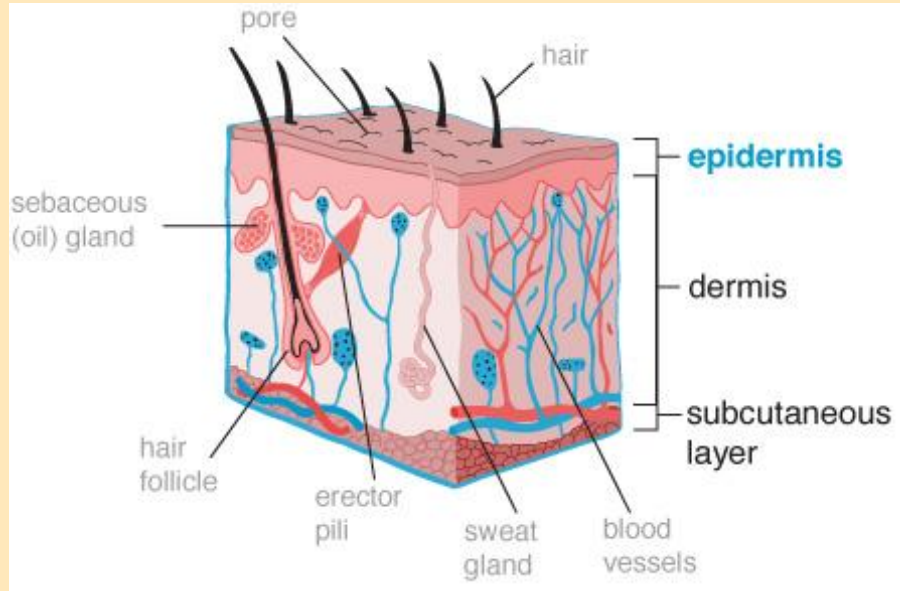
6. The two holes in your nose are called what?

Nostrils



7. The outside layer of skin on the human body is called the?

Epidermis



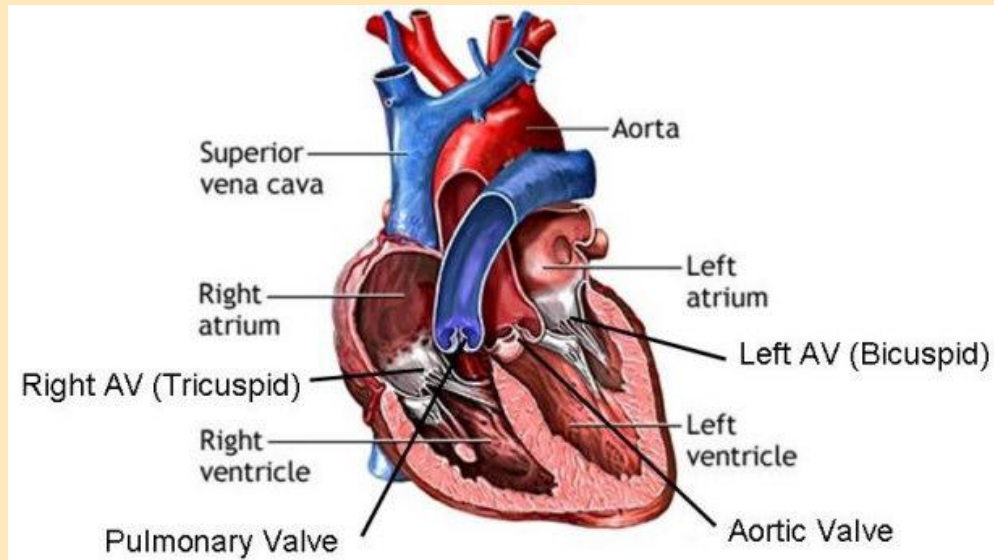
8. The coloured part of the human eye that controls how much light passes through the pupil is called the...?

Iris



9. True or false? The two chambers at the bottom of your heart are called ventricles.

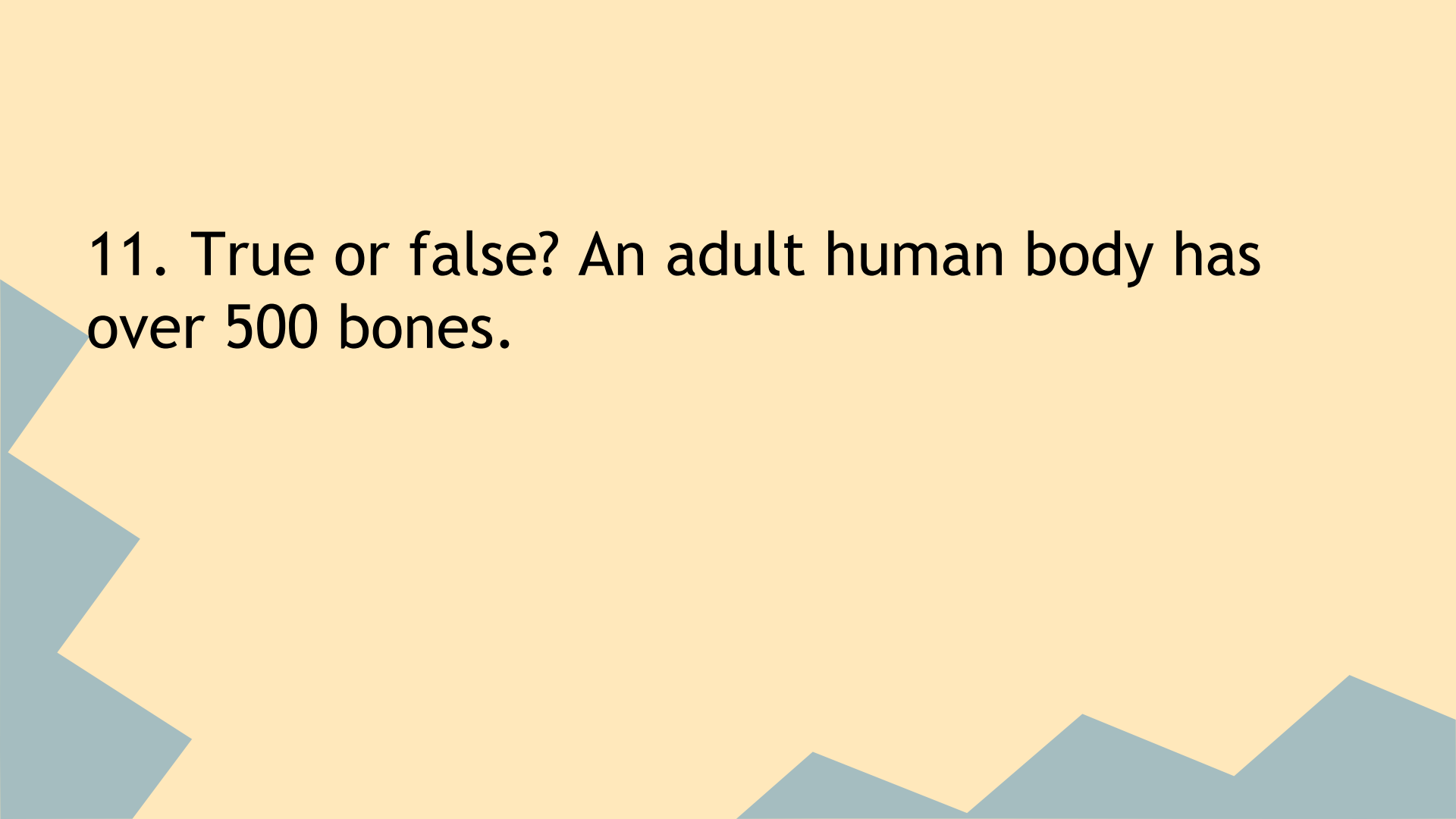
True



10. What substance are nails made of?

Keratin





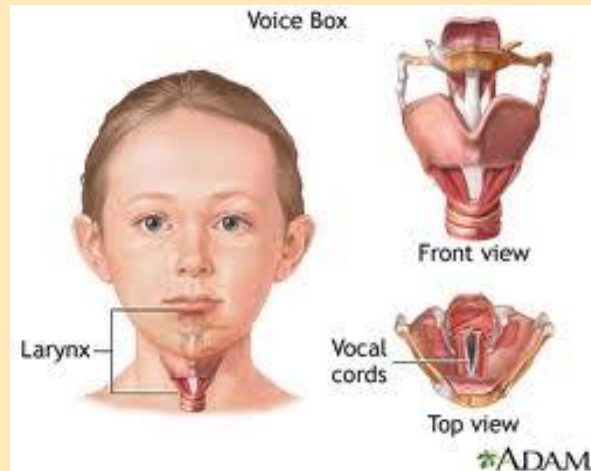
11. True or false? An adult human body has over 500 bones.

False (there are 206)



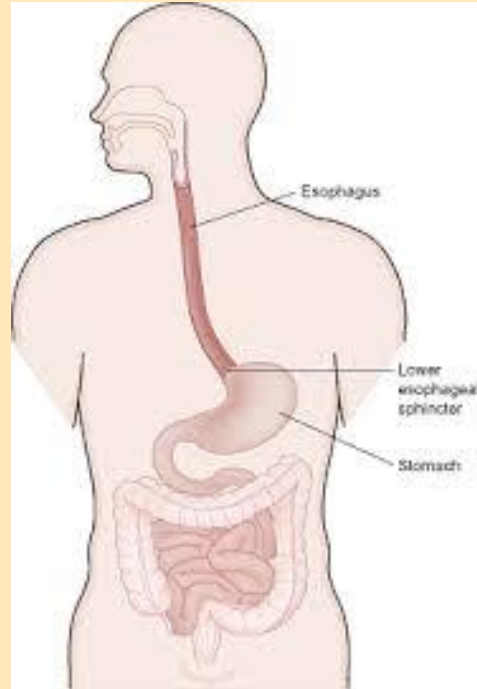
12. Another name for your voice box is the?

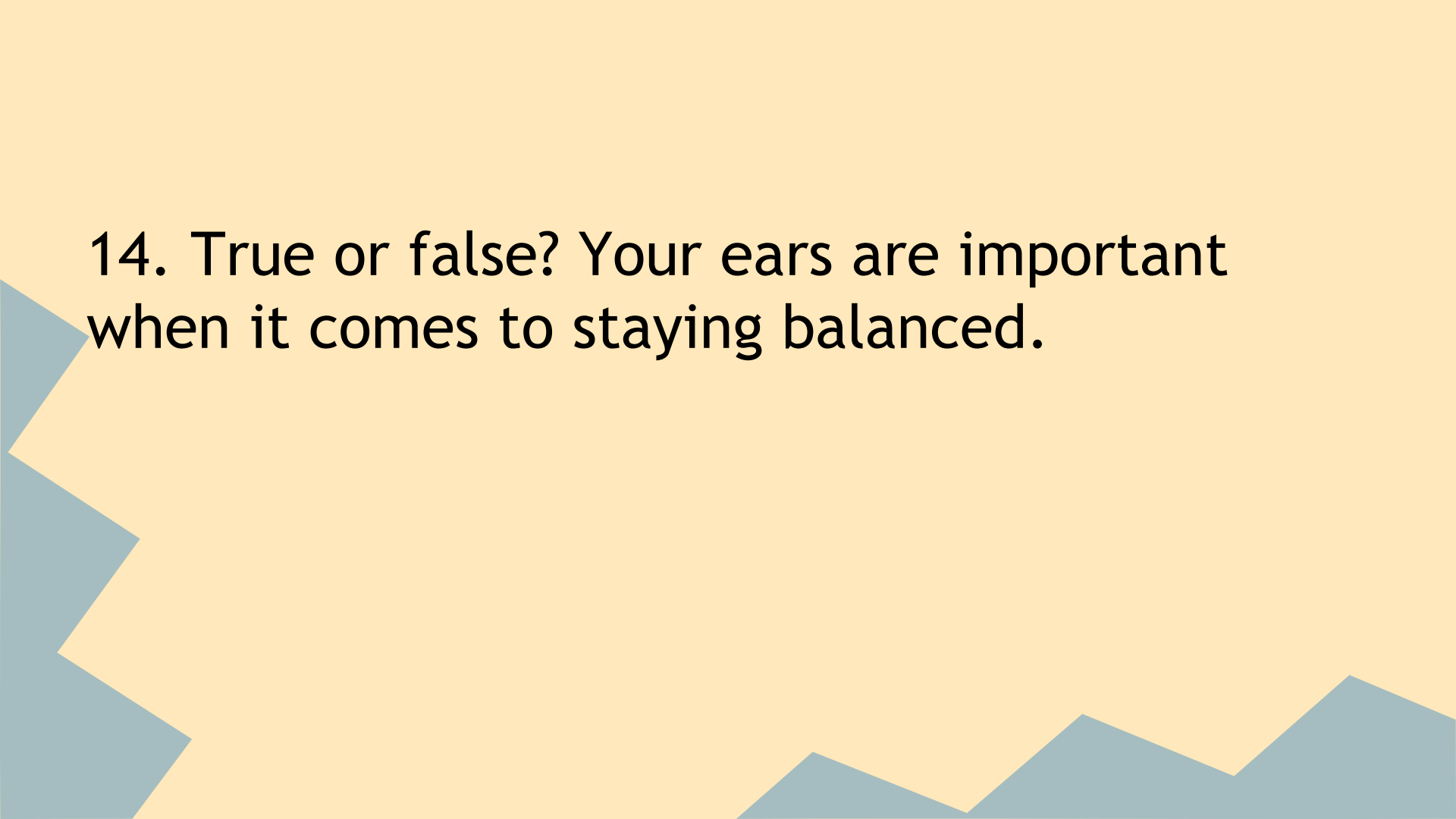
Larynx



13. What is the name of the long pipe that shifts food from the back of your throat down to your stomach?

Esophagus

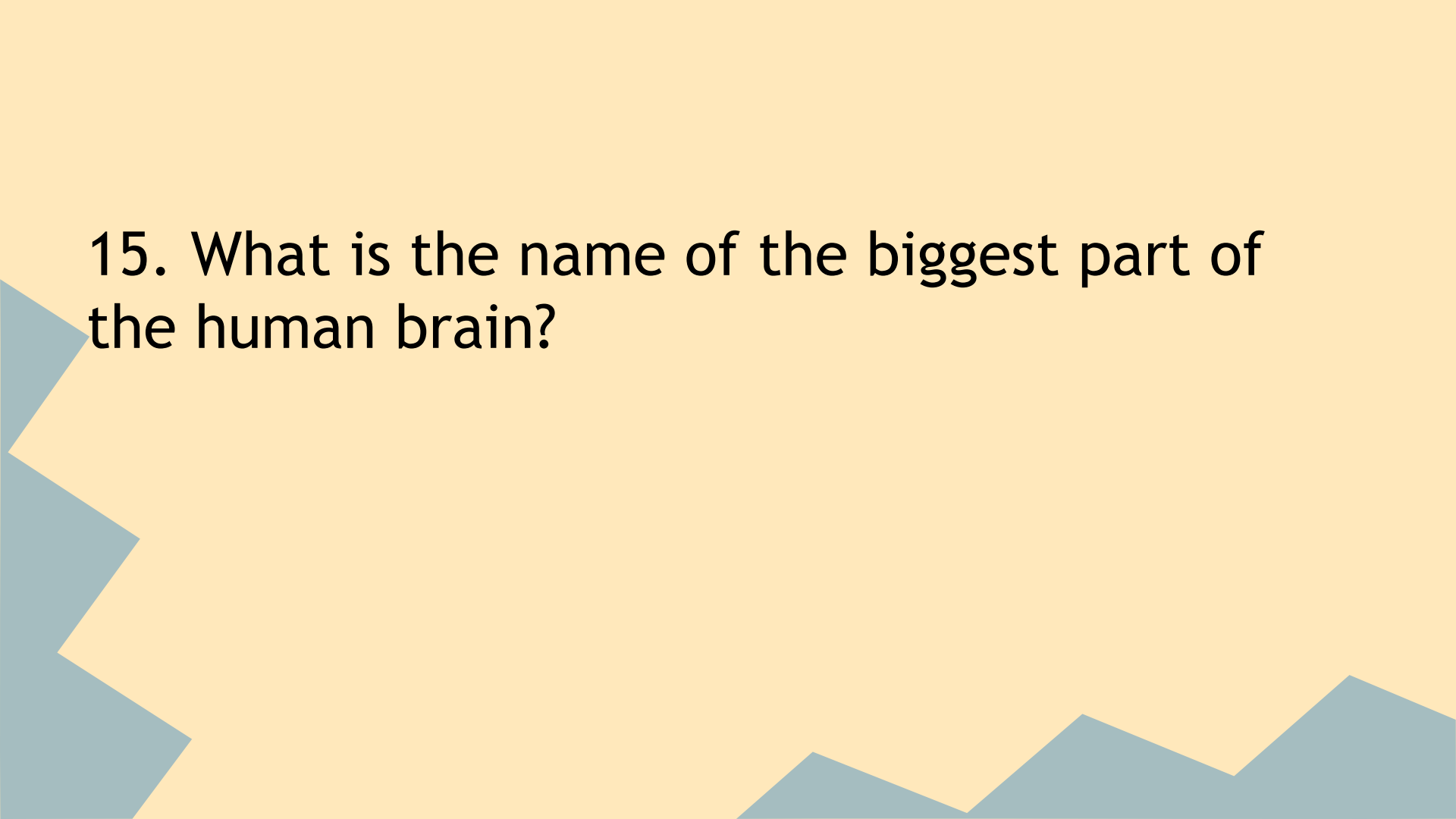




14. True or false? Your ears are important when it comes to staying balanced.

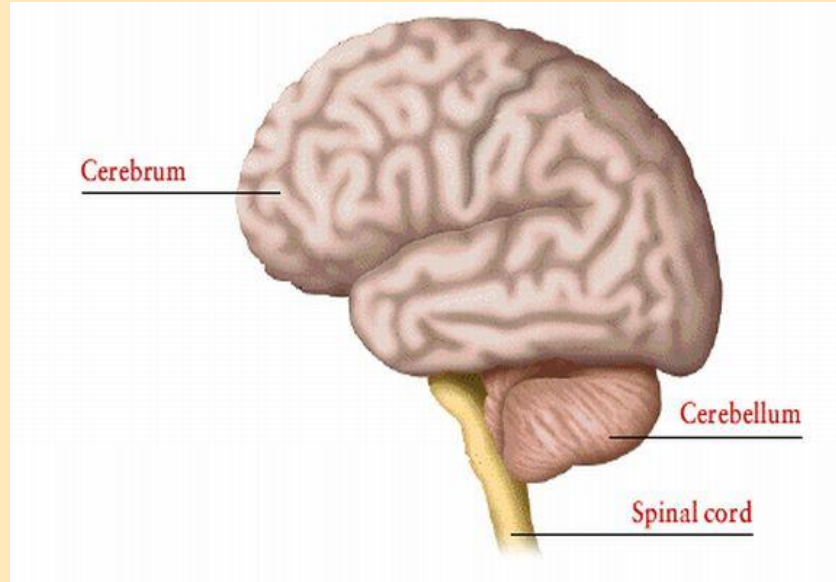
True

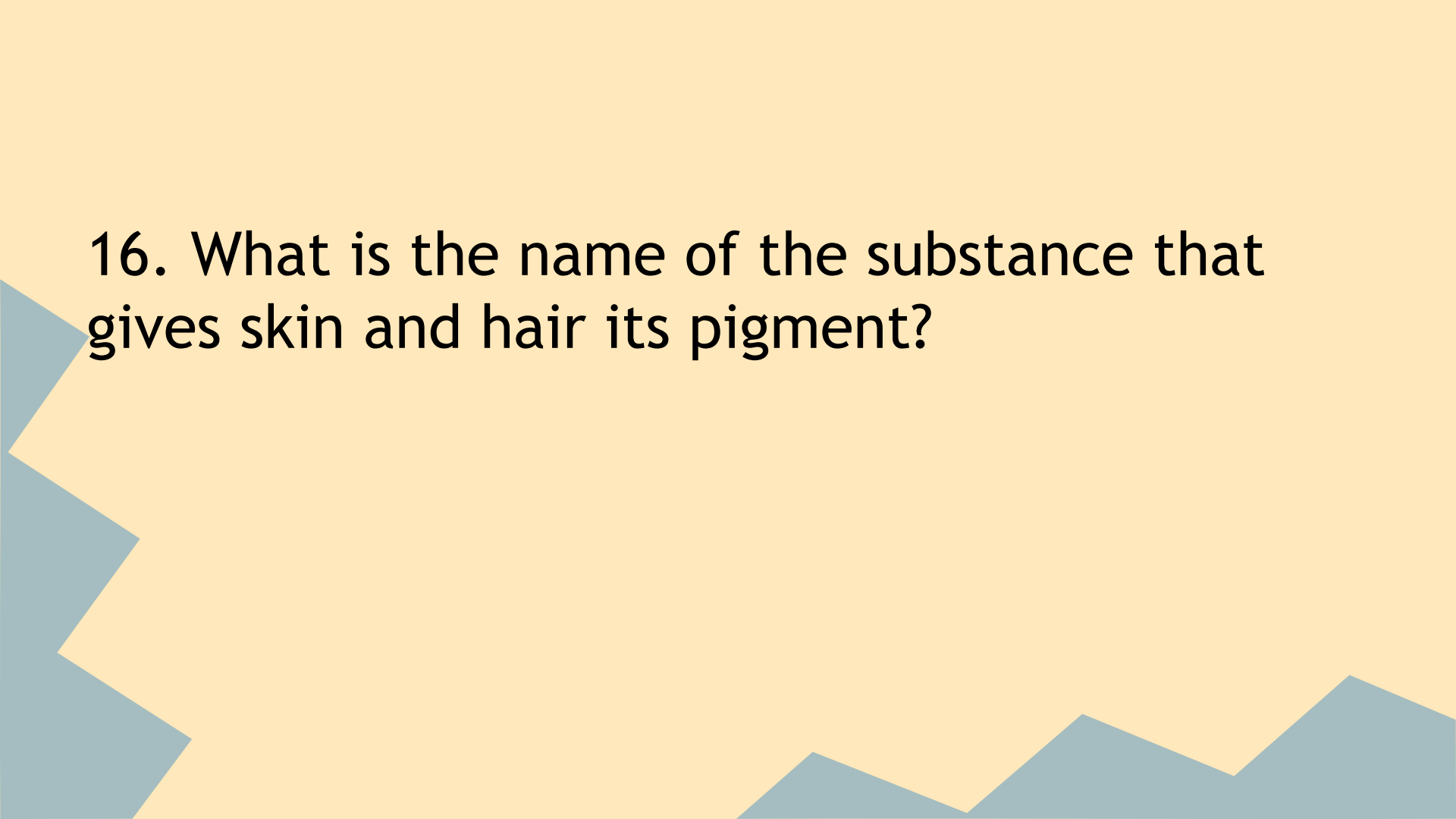




15. What is the name of the biggest part of the human brain?

Cerebrum





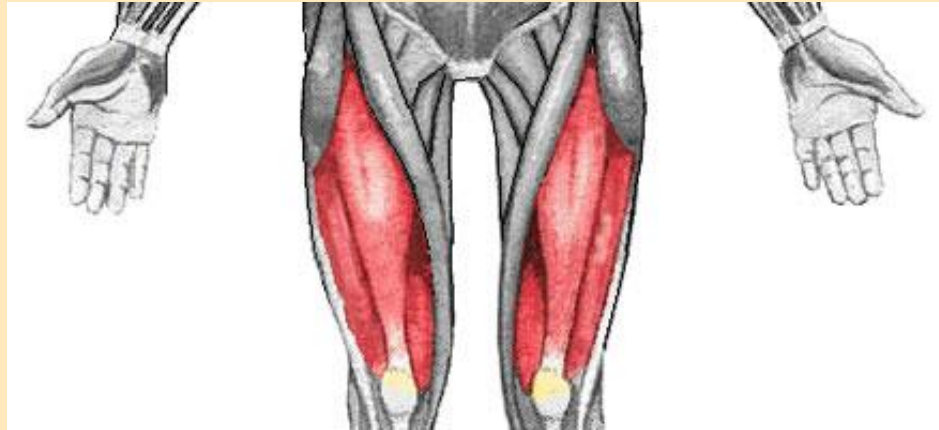
16. What is the name of the substance that gives skin and hair its pigment?

Melanin



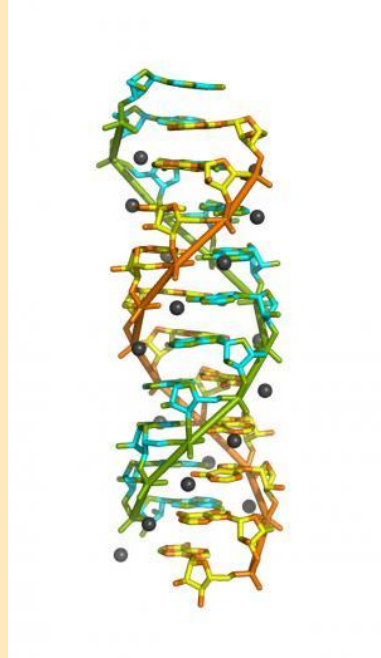
17. The muscles found in the front of your thighs are known as what?

Quadriceps

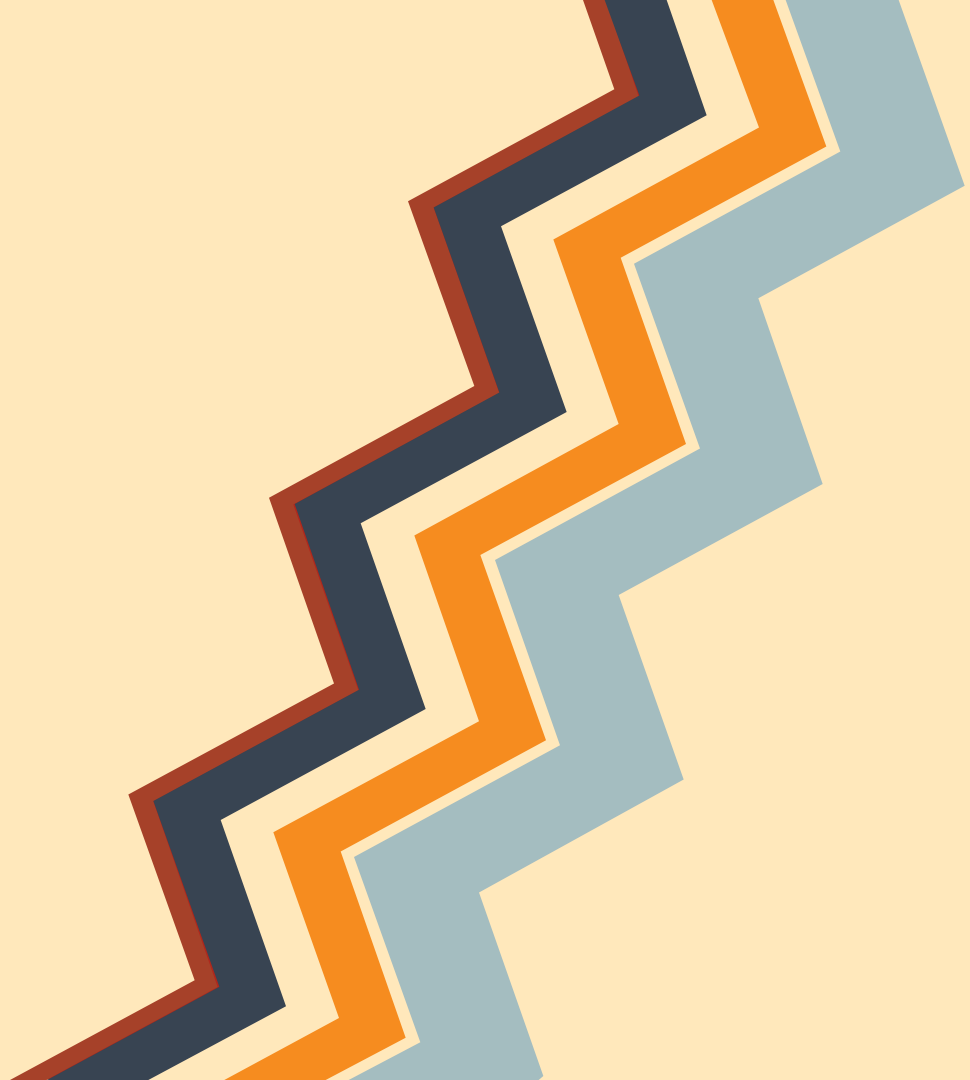
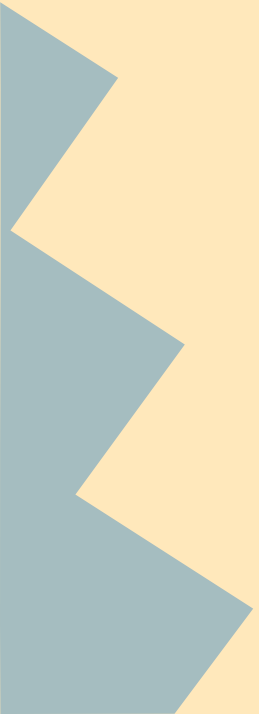


18. The shape of DNA is known as?

A double helix



Plants and animals



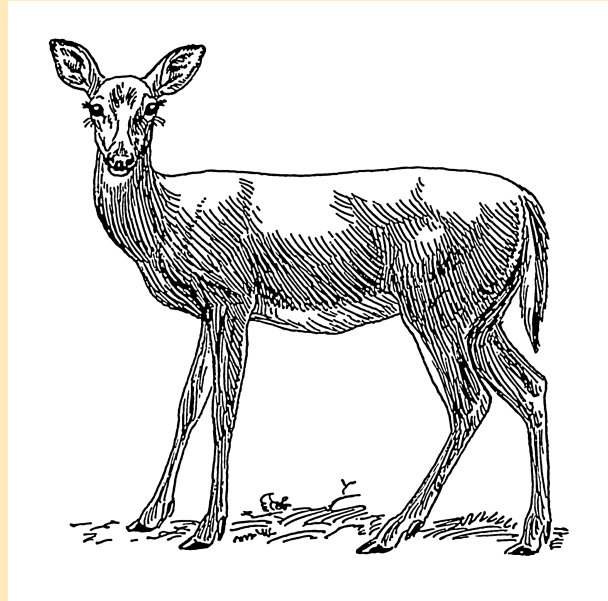
1. Groups of lions are known as what?

Prides



2. A 'doe' is what kind of animal?

A female deer.



3. What are female elephants called?

Cows



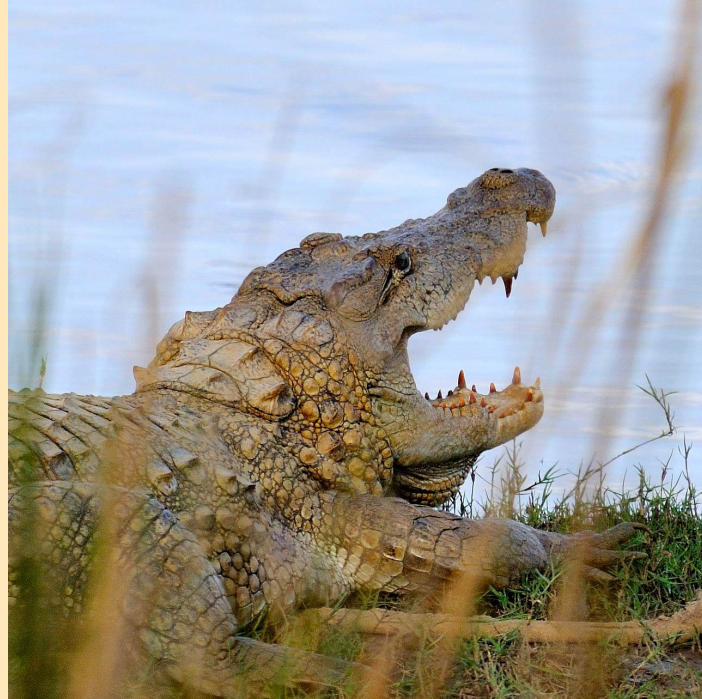
4. True or false? Mice live for up to 10 years.

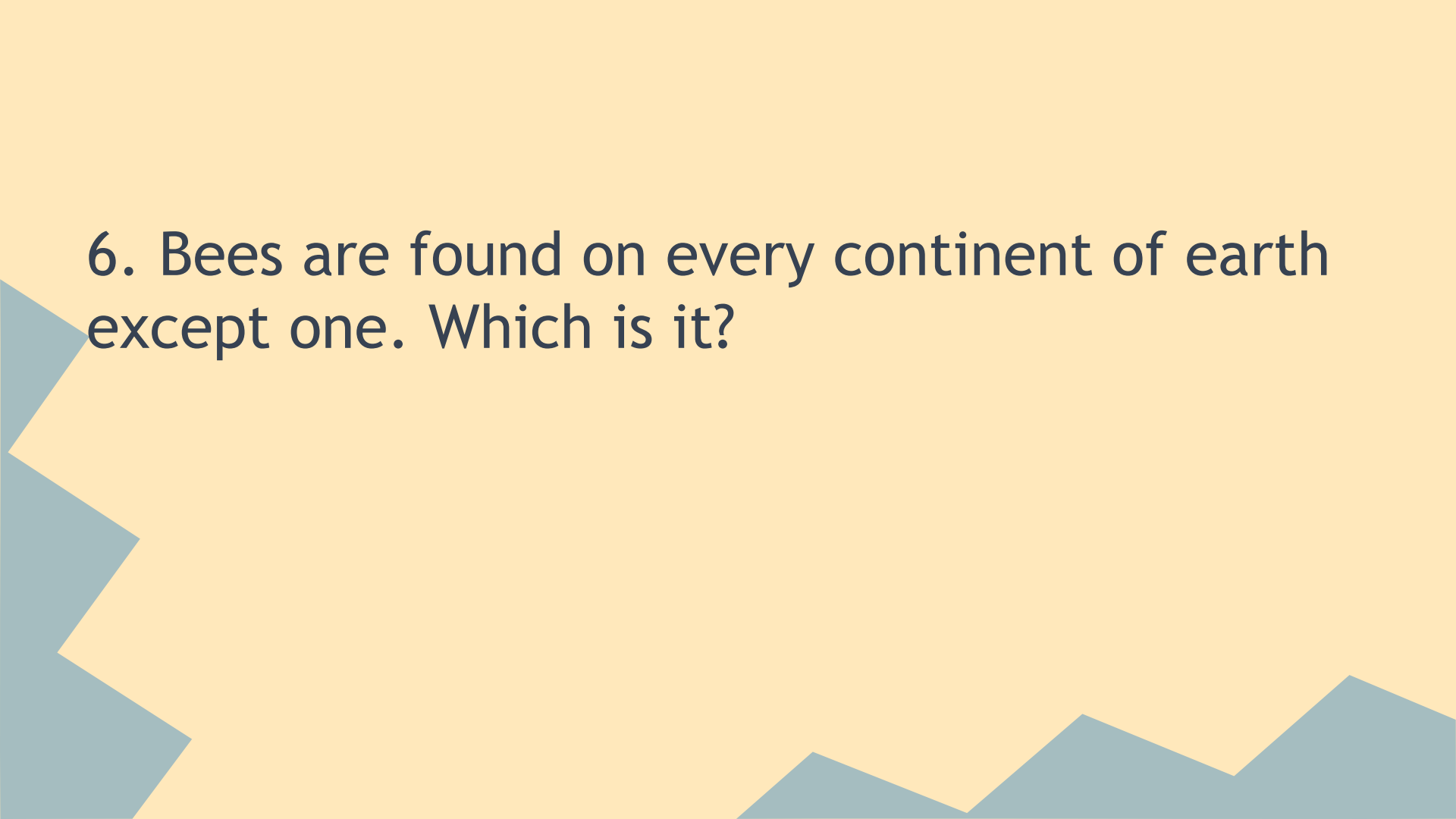
False (most mice live between 1 and 5 years)



5. True or false? Crocodiles have no sweat glands so they use their mouths to release heat.

True

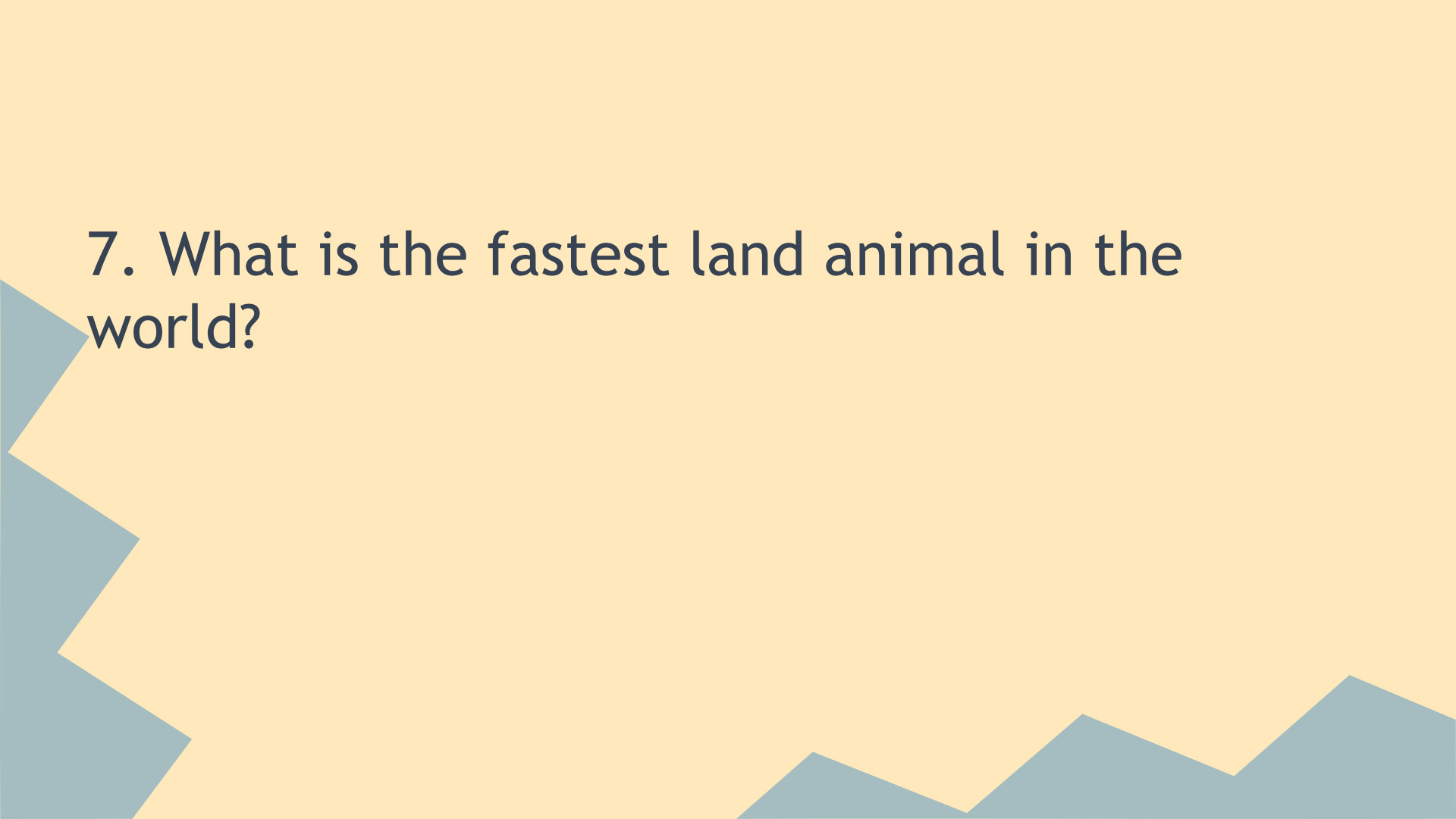




6. Bees are found on every continent of earth except one. Which is it?

Antarctica





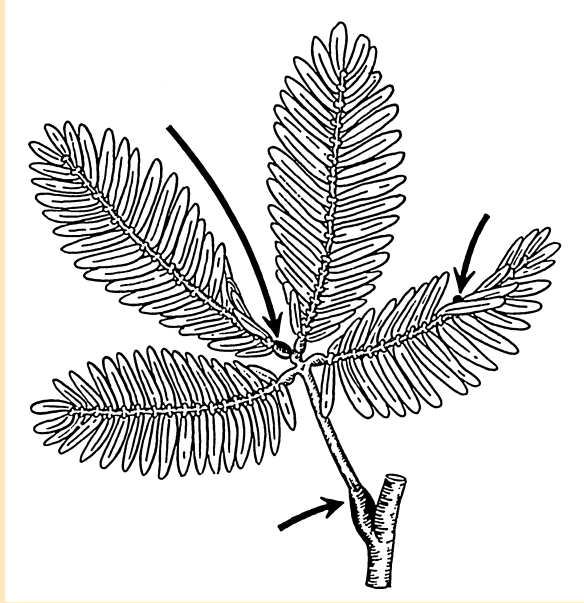
7. What is the fastest land animal in the world?

The Cheetah



8. The scientific study of plant life is known as what?

Botany



9. True or false? In the right conditions bamboo can grow over 60cm in one day.

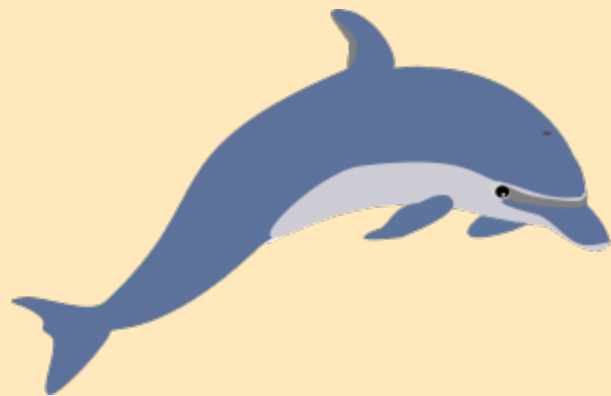
True

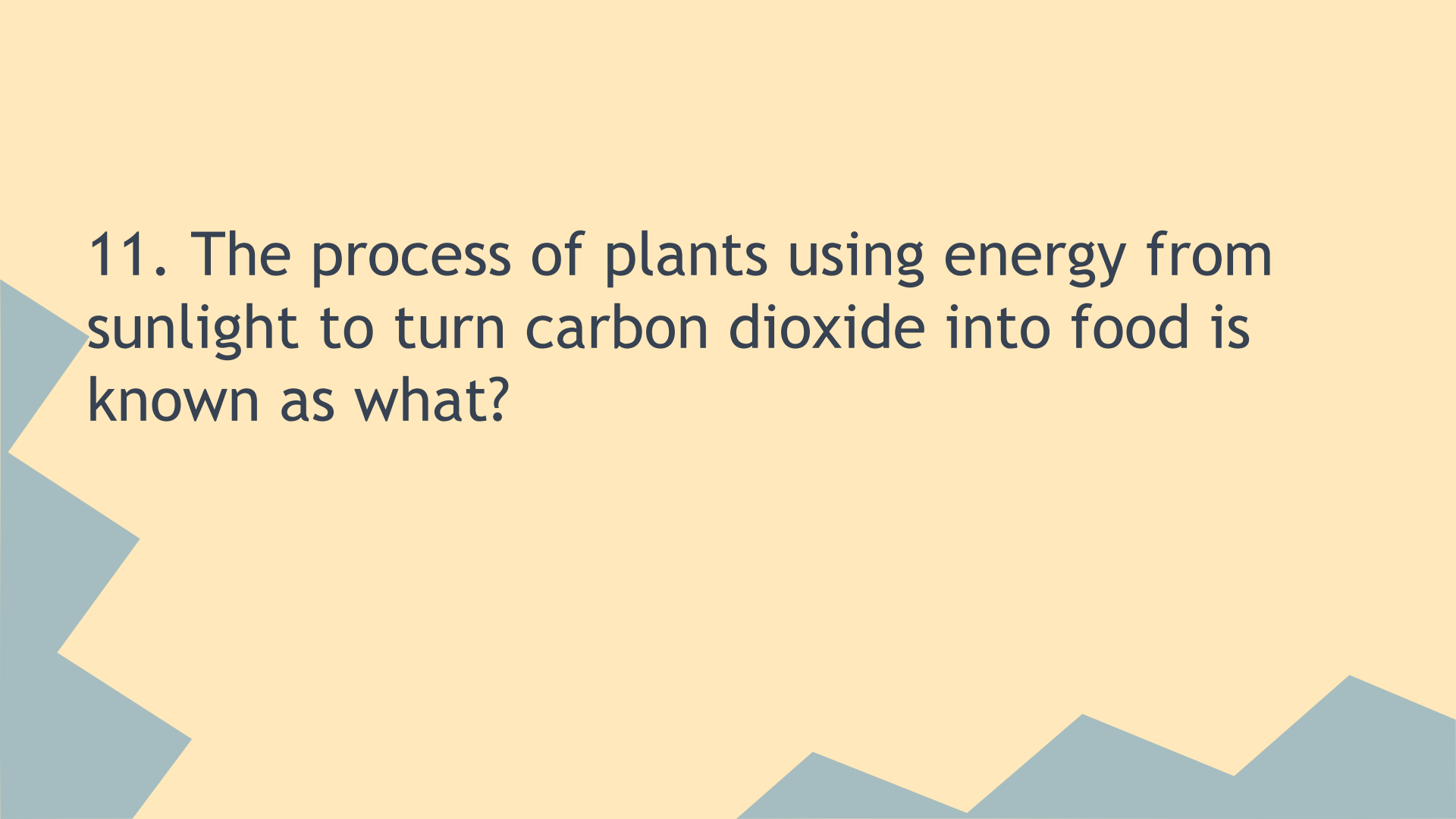


10. Is a dolphin a mammal?



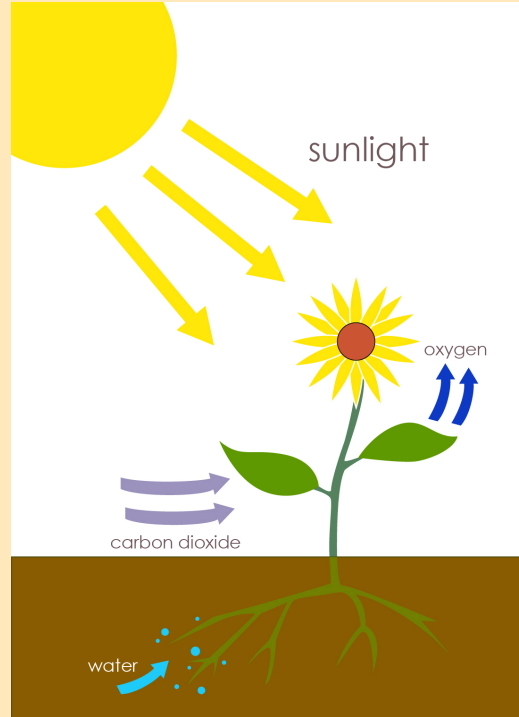
Yes





11. The process of plants using energy from sunlight to turn carbon dioxide into food is known as what?

Photosynthesis



12. The movement of pollen from the anthers to the stigma of a flower is known as what?

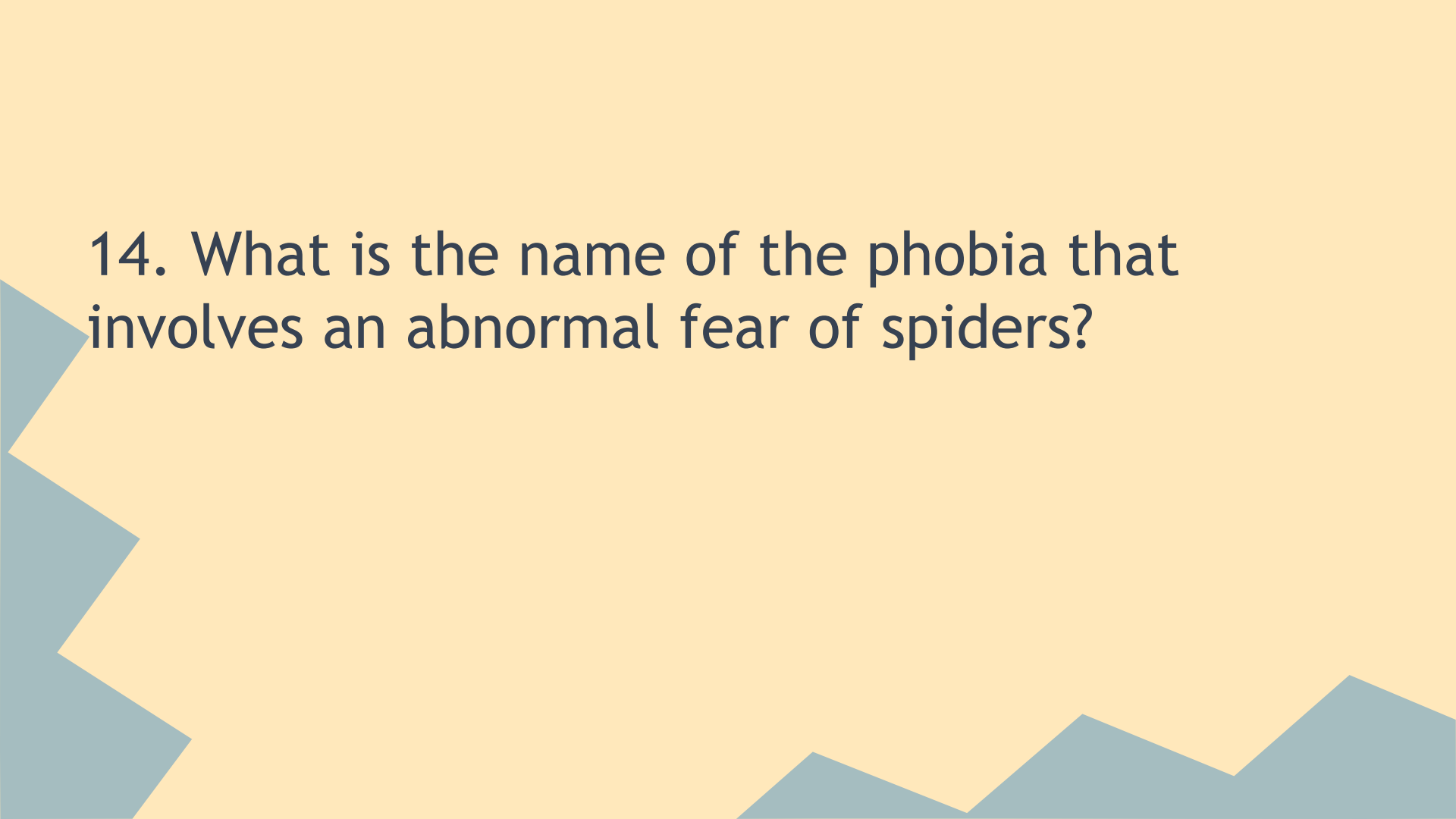
Pollination



13. Amber is made from fossilized tree _____?

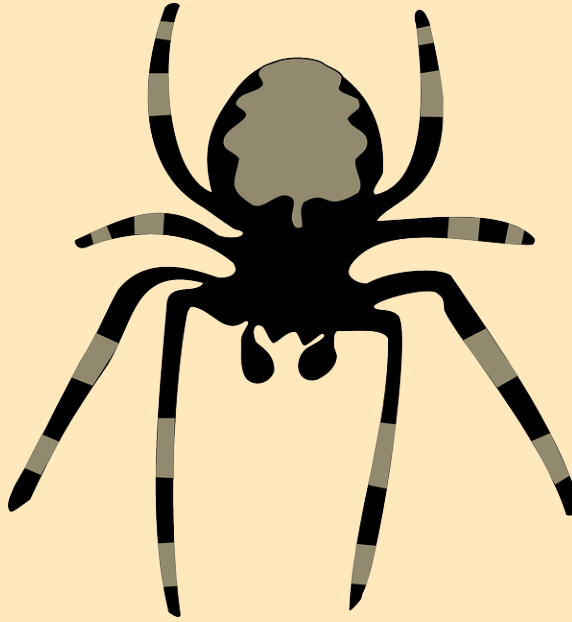
Resin





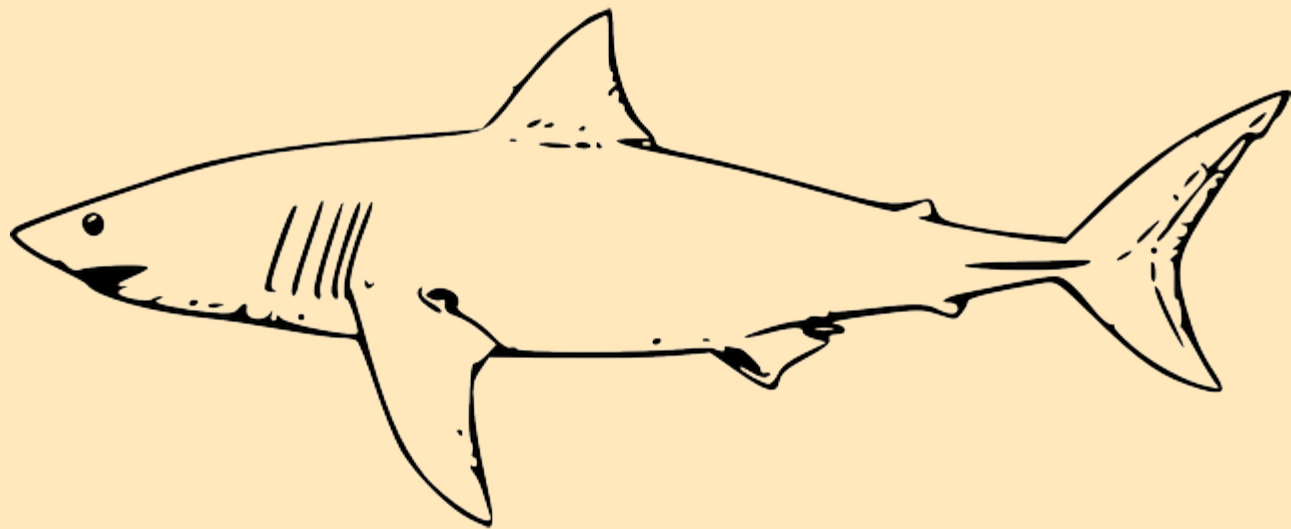
14. What is the name of the phobia that involves an abnormal fear of spiders?

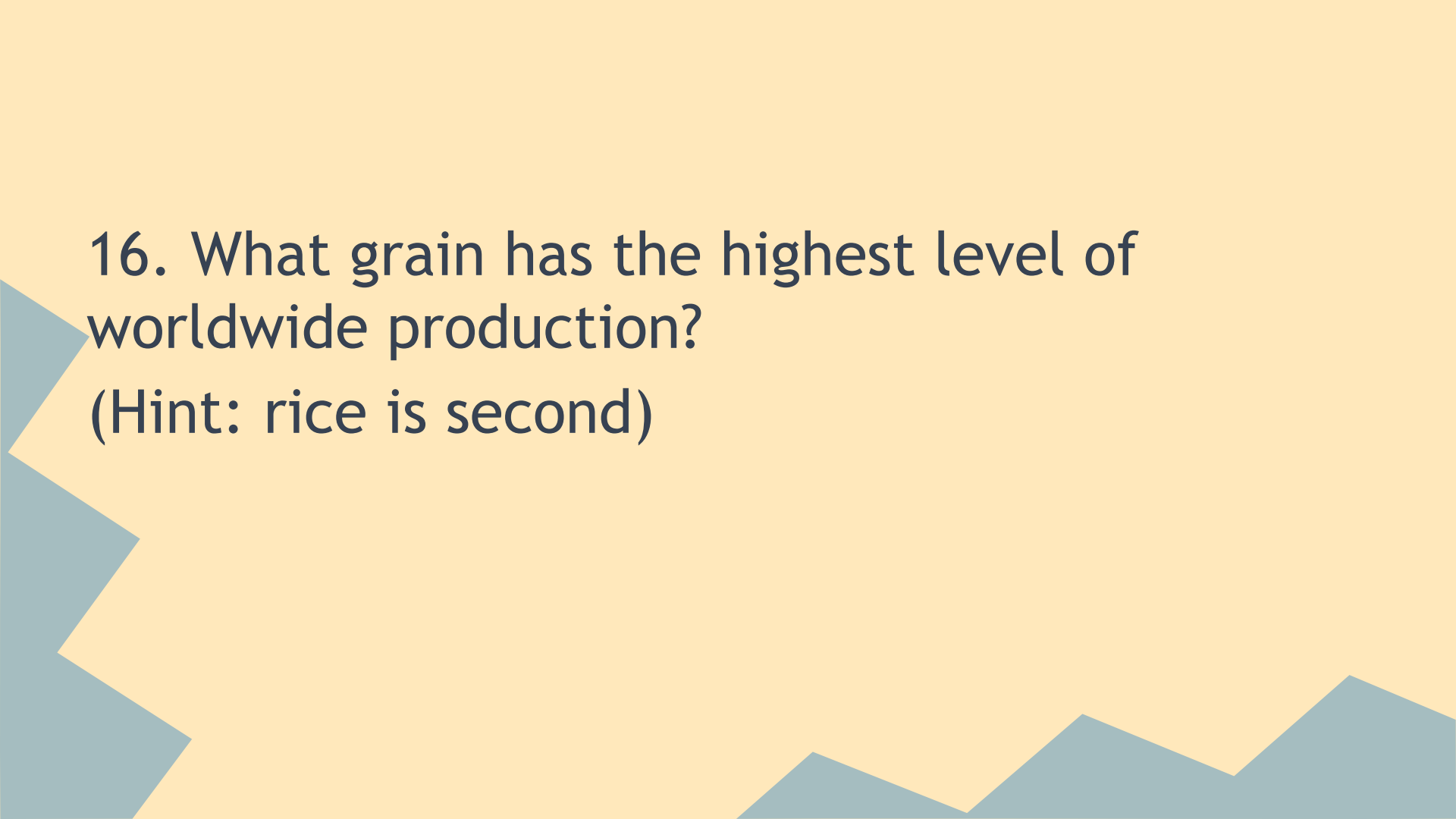
Arachnophobia



15. Is a shark a fish or a mammal?

Fish





16. What grain has the highest level of worldwide production?
(Hint: rice is second)

Maize

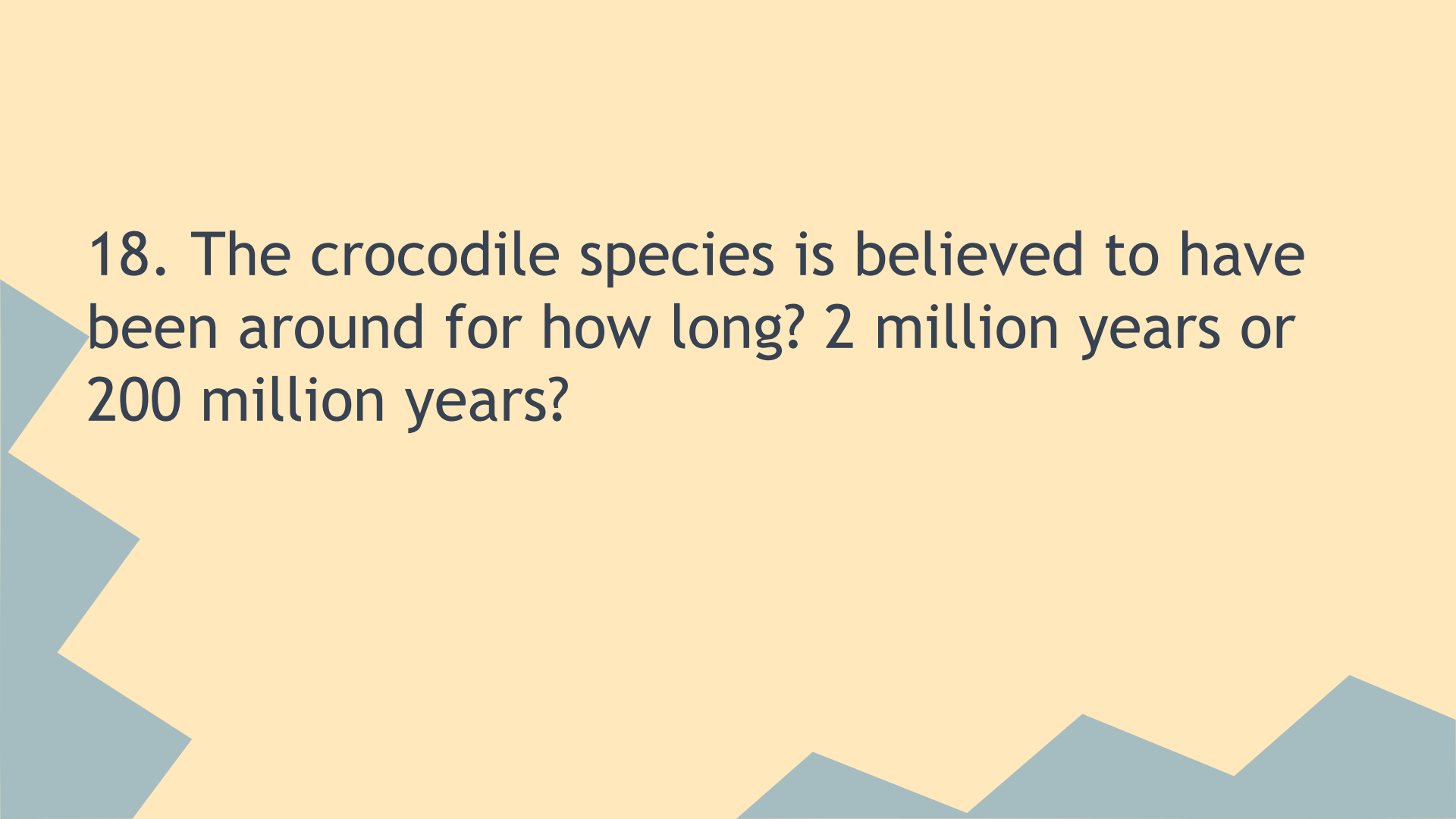




17. What food makes up nearly all (around 99%) of a Giant Pandas Diet?

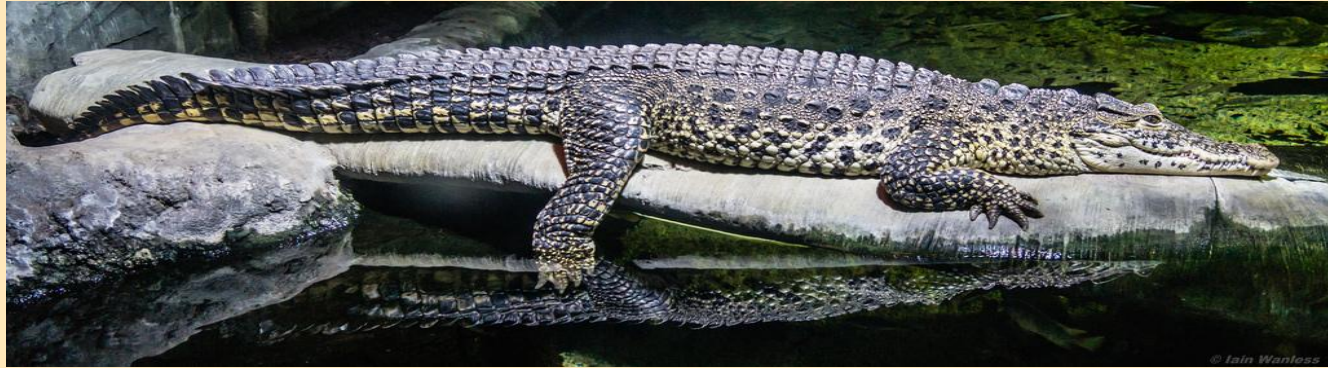
Bamboo





18. The crocodile species is believed to have been around for how long? 2 million years or 200 million years?

200 million years.



19. What type of animal is the largest primate in the world?

Gorilla



Physical World

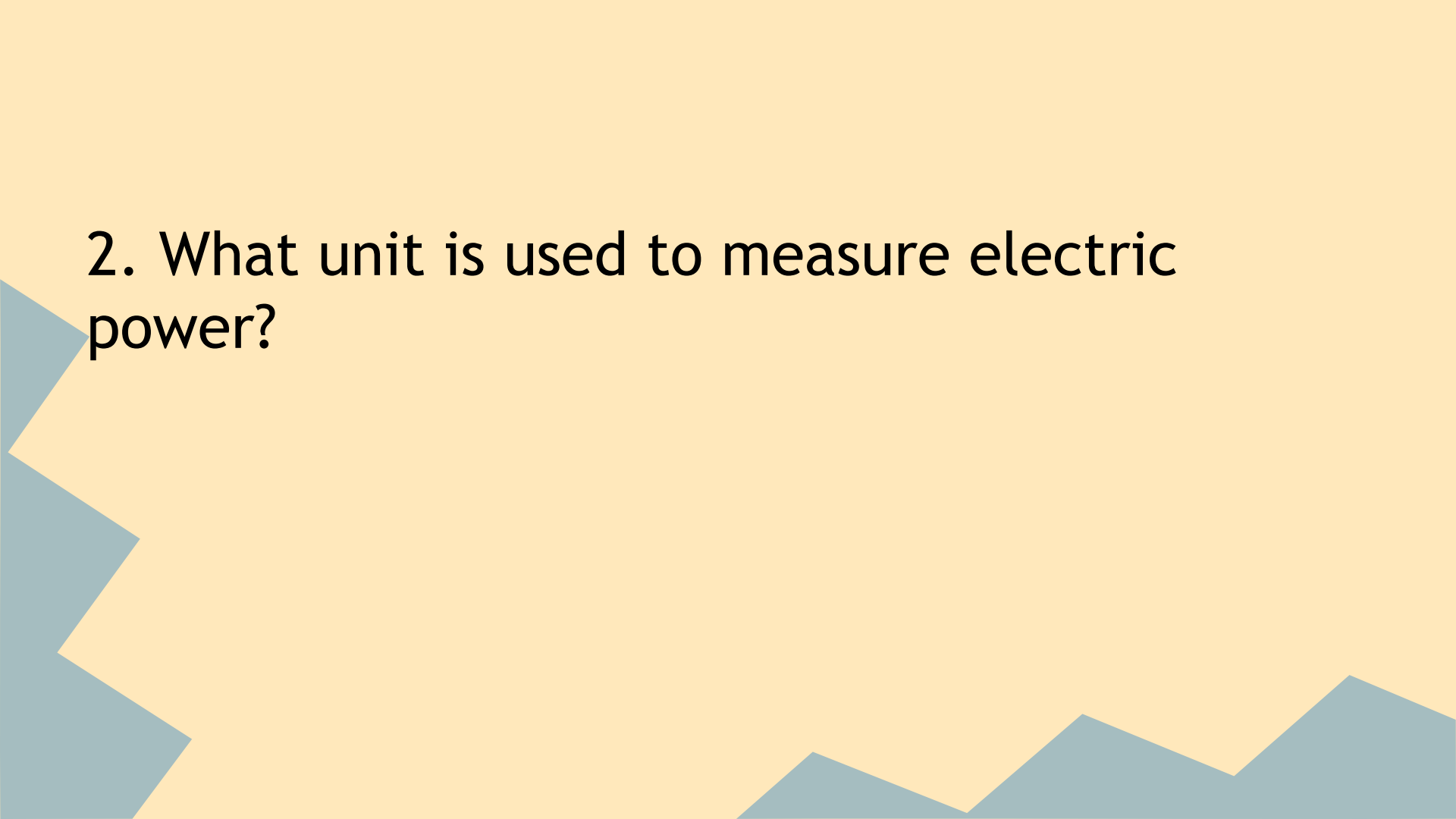


1. What is light a form of?



Energy





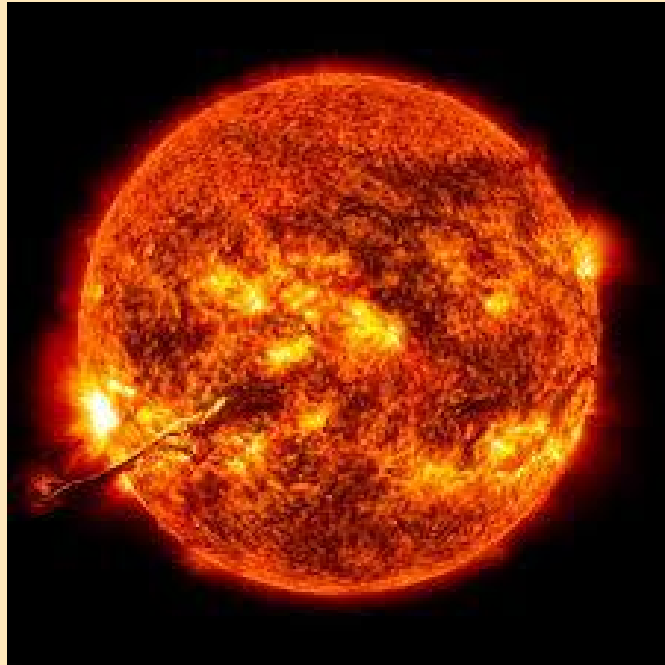
2. What unit is used to measure electric power?

Watts



3. What is the Earth's primary source of energy?

The sun



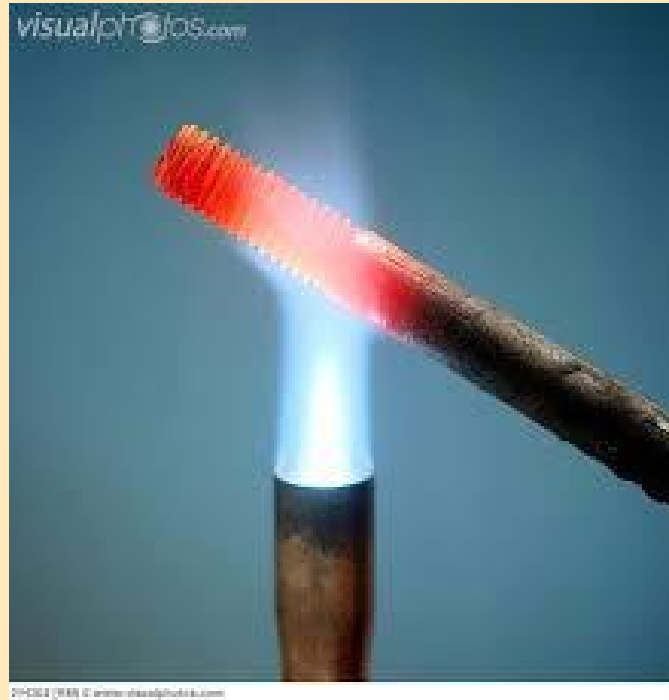
4. A thermometer is used to measure what?

Temperature



5. What happens to metal when it is heated?

Expands



6. What happens to metal when it is cooled?

Contracts



7

What can be used to turn electrical devices on and off?

Switches



8

The wire in a light bulb is called what?

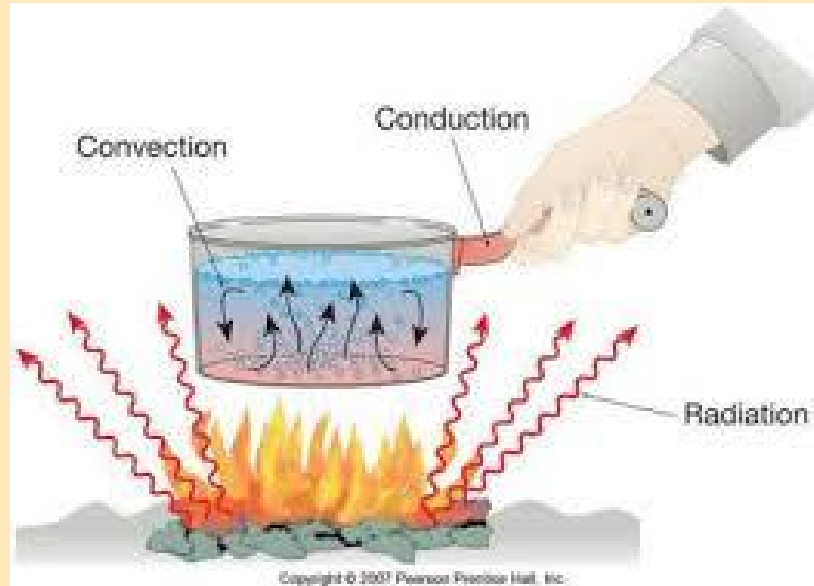
The Filament



9

What are the three ways that heat can move?

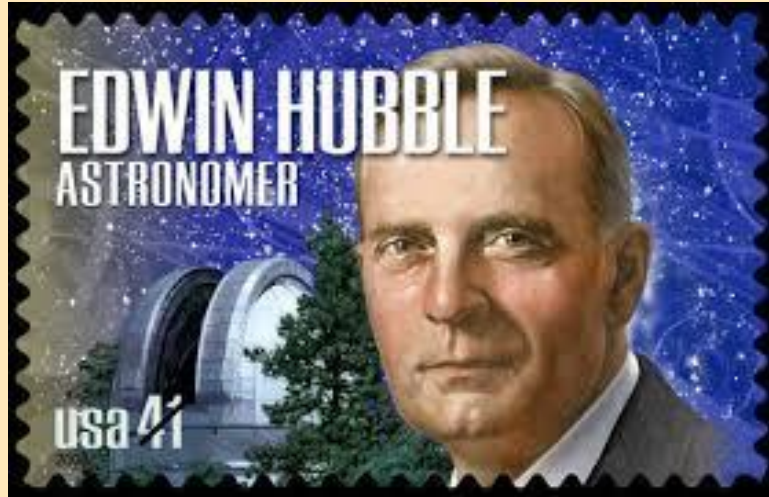
Radiation, conduction and convection



10

Who is the Hubble Space telescope named after?

Mr Edwin Hubble



11

What is the flow of electrical energy called?

Current



12

Electricity is a form of _____

Energy



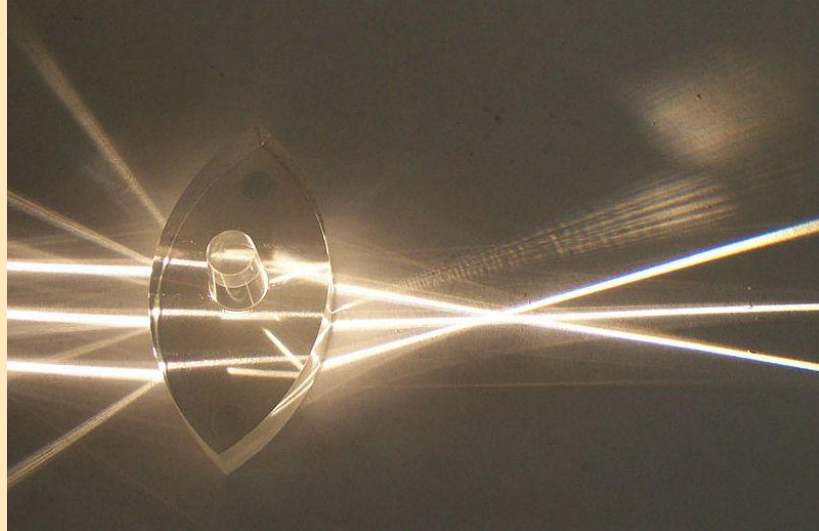
13. What can light be split into?

A spectrum of colours



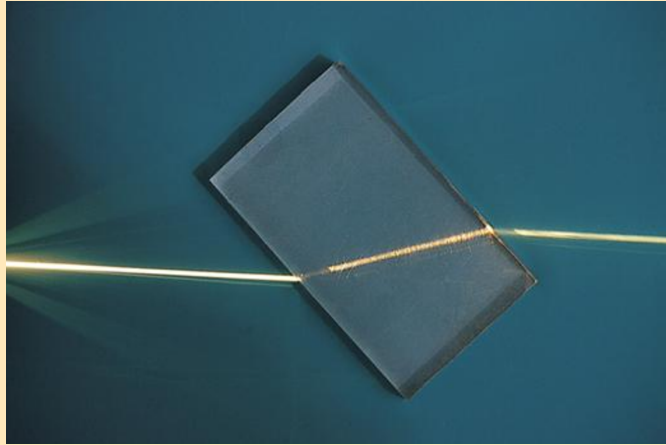
14. A magnifying glass is what type of lense?

Convex



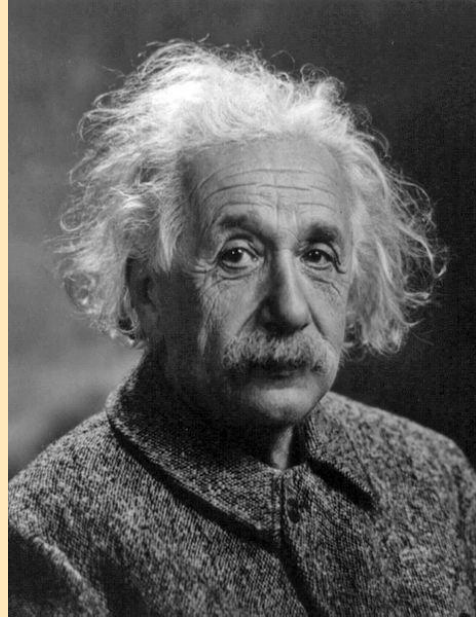
15. When light bends as it enters a different medium it is known as what?

Refraction



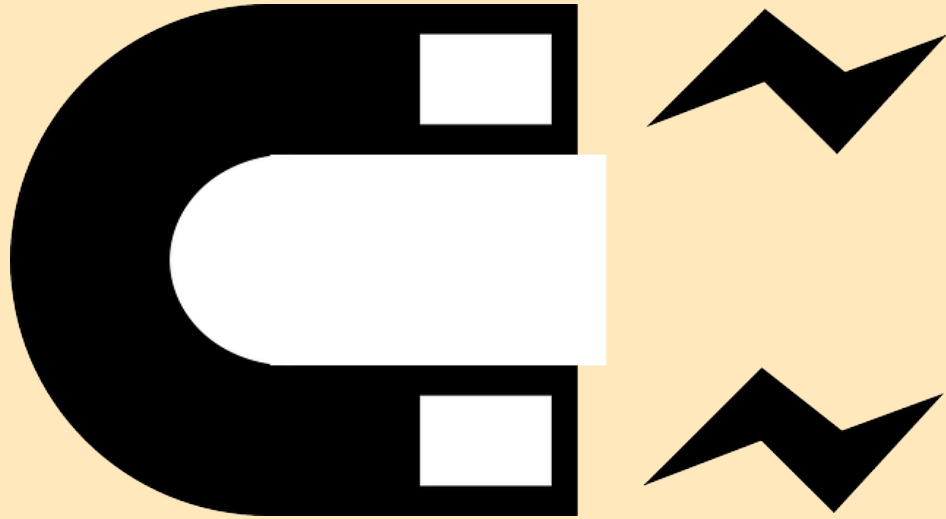
16. What scientist is well known for his theory of relativity?

Albert Einstein



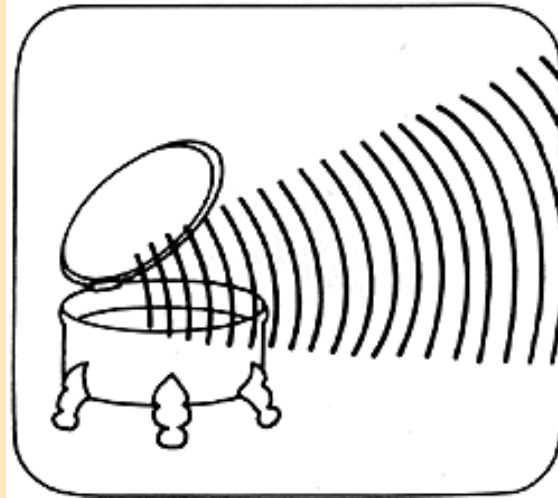
17. An electrical current can produce magnetic.....

Forces



18. What vibrates to produce sound?

Matter



19. A person who studies physics is known as
a.....

Physicist

